

**MATRISE D'OEUVRE :**  
**ARCHITRUUK / Bruno FOUCAL - Architecte DPLG**  
 15, rue de la Côte de Bellevue - 49000 ANGERES  
 T. : 02 41 87 24 11 / M. : architruuk@free.fr



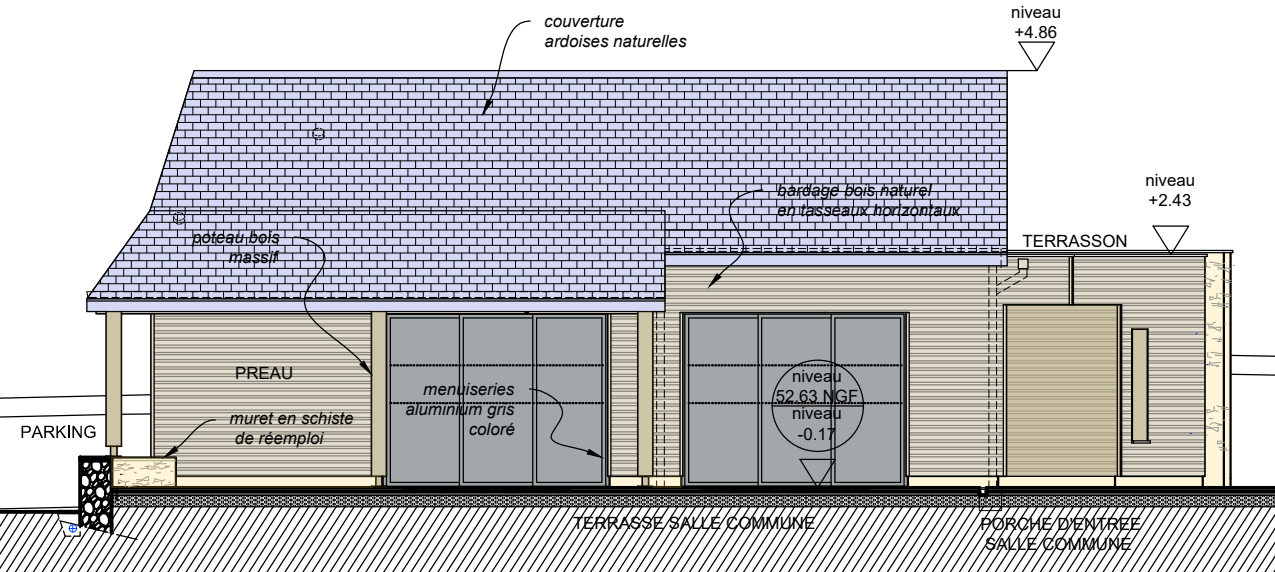
**MATRISE D'OUVRAGE :**  
**ASSOCIATION HABITAGE**  
 12, rue Guérin des Fontaines - 49250 FONTAINE-GUERIN  
 T. : 02 41 78 47 10 / M. : contact@habitage-asso.fr

**REHABILITATION & RESTRUCTURATION**  
**D'UNE HABITATION**  
**EN 6 LOGEMENTS POUR PERSONNES AGEES**  
 34, rue de l'Hôtel de Ville - COMBREE - 49520 OMBREE D'ANJOU

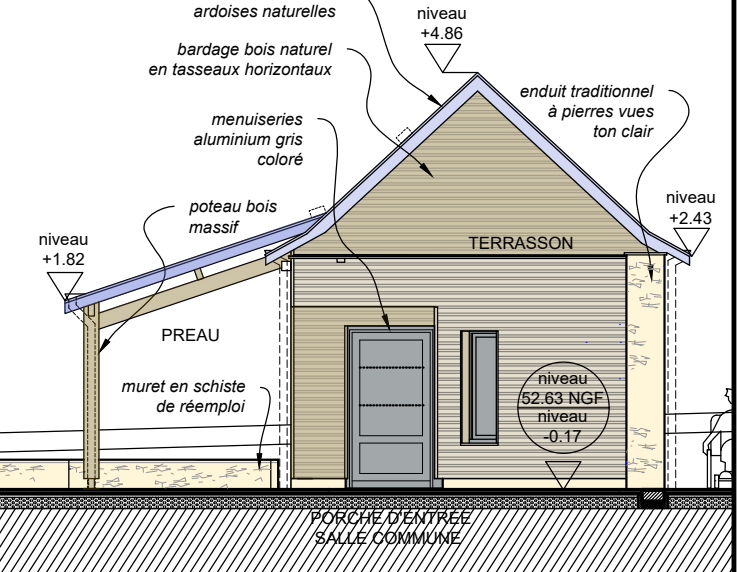
**DEMANDE DE PERMIS DE CONSTRUCTION MODIFICATIF**  
**PCMS\_BATIMENT C (GRANGE)**  
**ETAT EXISTANT & PROJET**  
**ELEVATIONS DES FACADES**

**ECH.:**  
 1/100  
 18/12/2023  
 PCM5

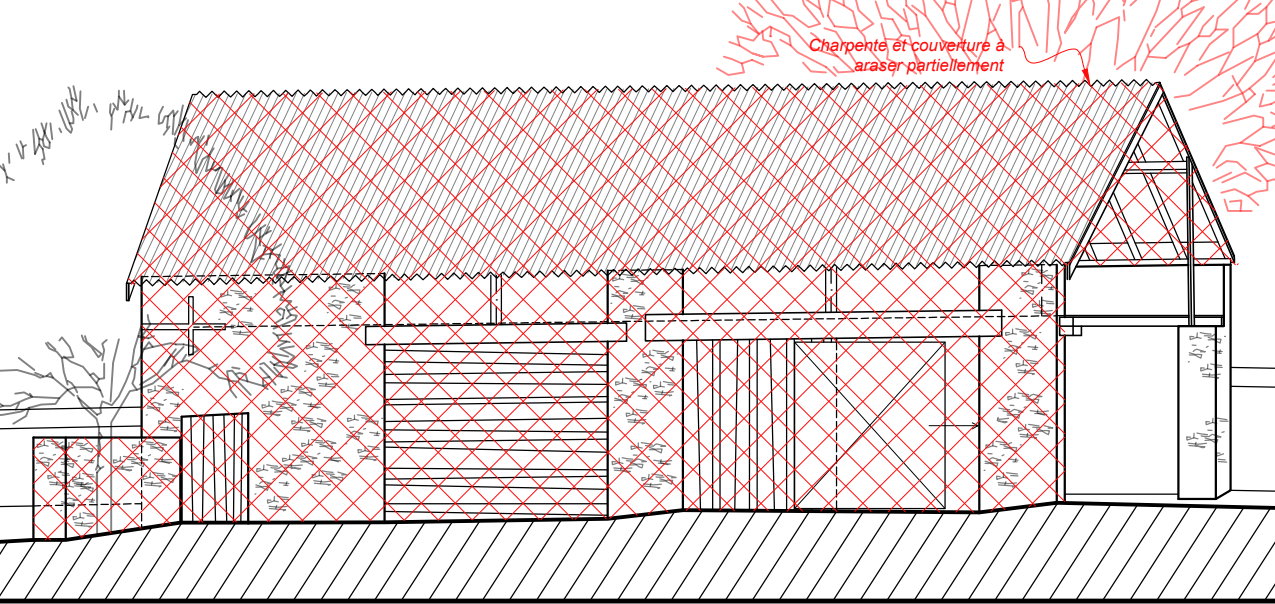
**PCM5\_BATIMENT C (GRANGE)**  
**PROJET\_ELEVATION FACADE 1**



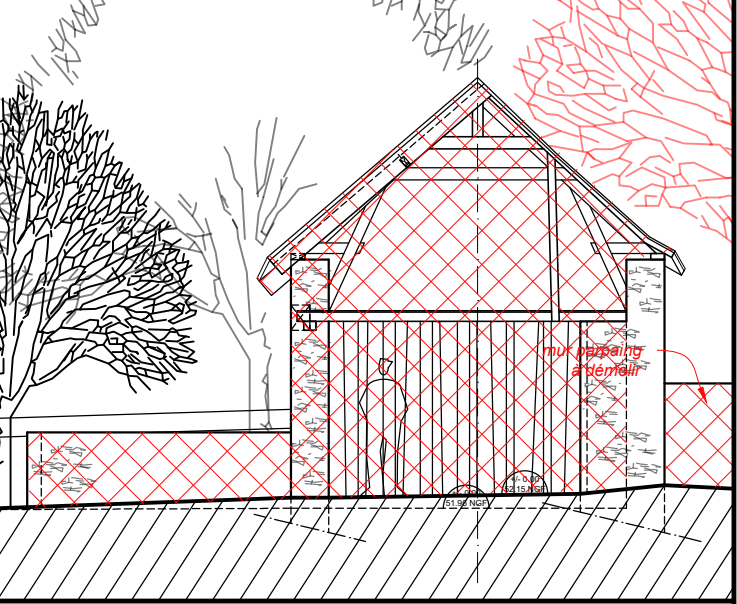
**PCM5\_BATIMENT C (GRANGE)**  
**PROJET\_ELEVATION FACADE 2**



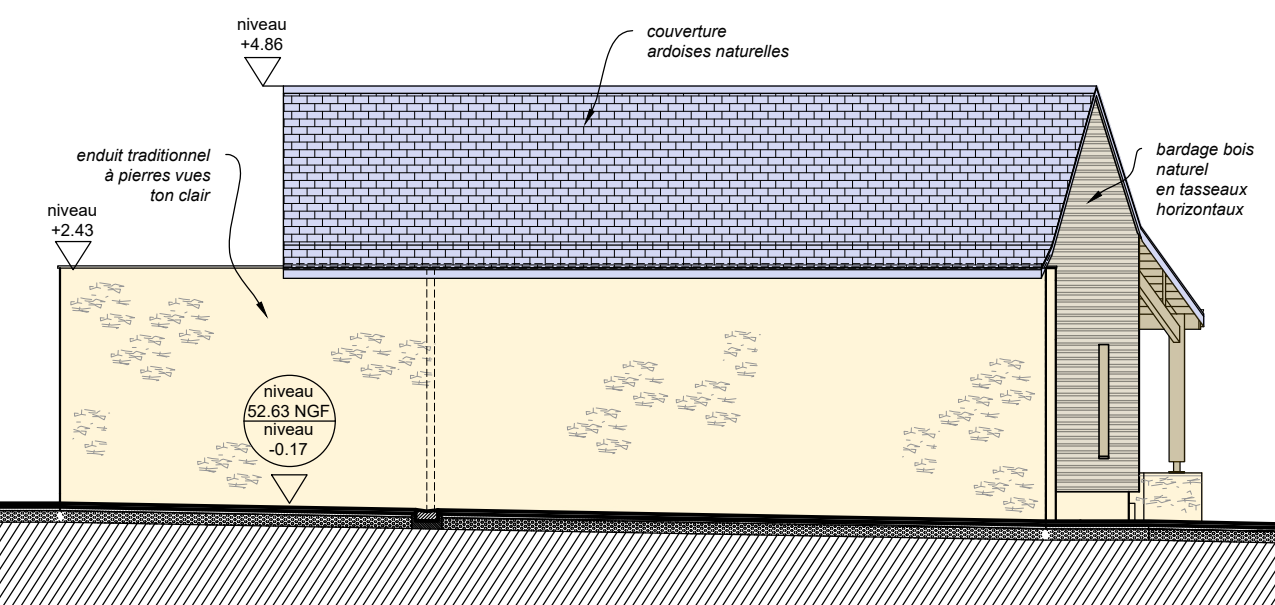
**PC5\_BATIMENT C (GRANGE)**  
**EXISTANT\_ELEVATION FACADE 1**



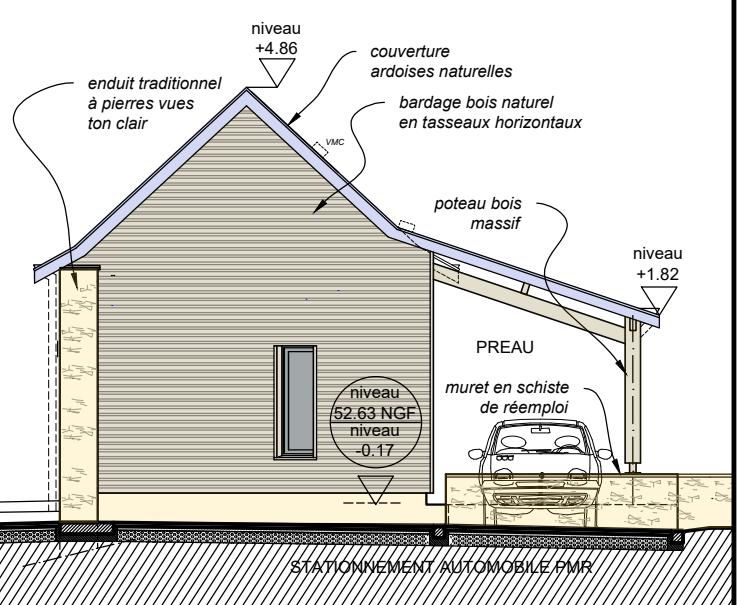
**PC5\_BATIMENT C (GRANGE)**  
**EXISTANT\_ELEVATION FACADE 2**



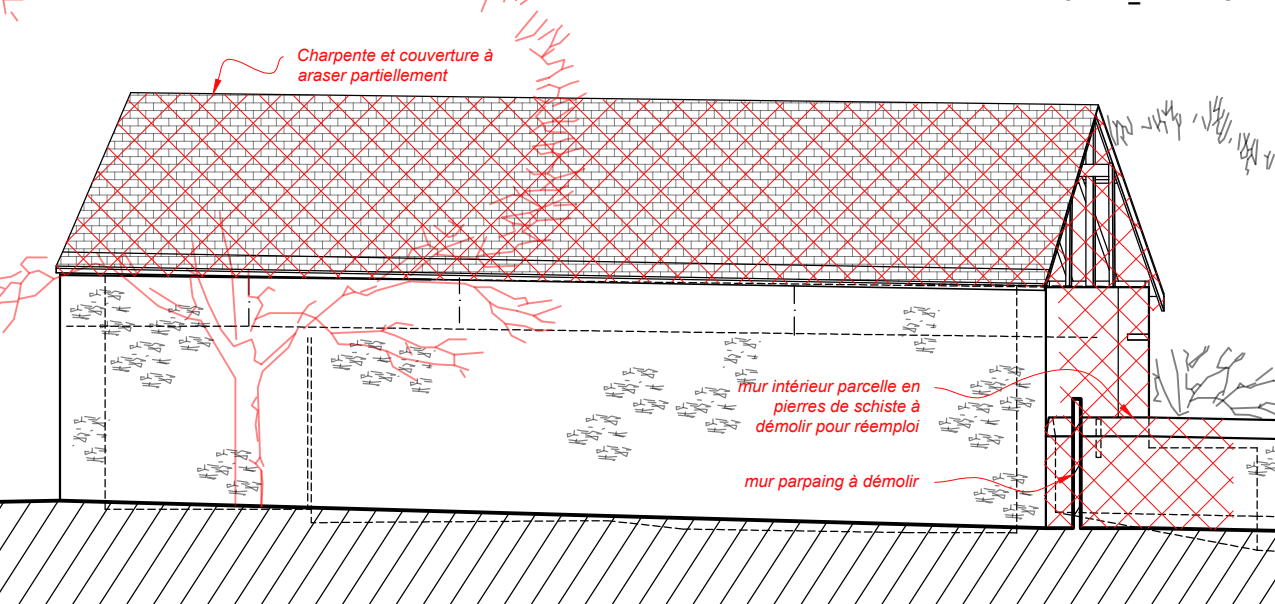
**PCM5\_BATIMENT C (GRANGE)**  
**PROJET\_ELEVATION FACADE 3**



**PCM5\_BATIMENT C (GRANGE)**  
**PROJET\_ELEVATION FACADE 4**



**PC5\_BATIMENT C (GRANGE)**  
**EXISTANT\_ELEVATION FACADE 3**



**PC5\_BATIMENT C (GRANGE)**  
**EXISTANT\_ELEVATION FACADE 4**

